



Scheme - M6 J16-J19 Smart Motorway
All Lanes Running (ALR) Project

Contractor - Carillion Kier JV

ZONEGUARD



M6, Junction 16 to 19, Knutsford

zoneguard®

www.zoneguard.uk.com

**SAFETY IS
OUR BUSINESS**



The narrow 700mm foot of ZONEGUARD® enables a wider working area for construction staff, plant and vehicles operating behind the steel barrier providing improved safety.

Be smart, be safe, work safe and go home safe.

The M6 Junctions 16-19 Smart Motorway All Lanes Running (ALR) Project covers an 18 mile stretch of motorway used by 132,000+ vehicles per day – 92 vehicles per minute. The route includes 4 motorway junctions, 37 overbridges, 7 underbridges and aims to substantially increase motorway capacity. This section of the 3 lane M6 motorway can be as busy as the 4/5 lane sections of the M25 motorway.

Principle contractor Carillion Kier JV has incorporated into the project its primary “work wellbeing strategy” which every employee is required to adhere to: “Be Smart. Be Safe. Work Safe and Go Home Safe”; Simple words but which mean a lot when staff are working in the central reserve of a busy motorway with vehicles passing at 50mph on either side of the work site – just metres away.

Safe work access and egress points from the outside lanes in both motorway directions into the central work area is a safety concern which

has been approached above and beyond normal work practice by the CKJV SMP delivery team, adding extra site safety to the already proven Asset VRS Varioguard and Zoneguard steel temporary barriers used extensively on this M6 – 18 mile section.

The narrow 700mm foot of the barrier enables a wider working area for construction staff, plant and vehicles operating behind the steel barrier. This additional work area width is of great value for improved road safety and traffic movement when bringing materials into and out of the site. Fully tested to BS EN1317 performance levels N1, N2 and H2 operators are reassured of proven safety performance of these traffic management barriers. Likewise, Asset Vecu-Stop crash cushions used on the approach ends of the temporary site barriers are all fully tested to EN1317 performance class 110km/h and offer High visibility to barriered sectors.

The addition of pre-painted red and white Multibloc TVCB Delineators, from Asset VRS's sister company Hardstaff Barriers, were adopted as a new method of access and egress delineation in place of the standard practice of cone and rope placement.


Pre-painted red and white, the Multibloc TVCBs were installed 4.3m from the running face of the temporary studs and the line of the traffic in the central reserve.

Traffic management and safety lane closures for working in and around the access and egress points were no longer required and works using plant and machinery can continue unabated behind the Hardstaff Multibloc Delineators. The 2,500kg

blocks offer N2/W3 containment and were bolted together and placed on the edge of the excavation, ensuring any errant public vehicle which may, by mistake, enter the central reserve, is unable to cross over carriageways or tip down into the central reserve works. Red and white Multiblocs' presence increases awareness to the travelling public of the work site and assists in avoiding confusion in and around works access and egress points. Matt comments “Since installation there have been no instances of members of the public entering the works behind works vehicles. With lorries constantly entering with ballast and leaving with excavated muck and debris, this new method of road site safety is a smart, safe method enabling everyone to Get Home Safely!”



working with



MULTIBLOC

Multibloc TVCBs provide a new method of access and egress delineation into the central reserve.

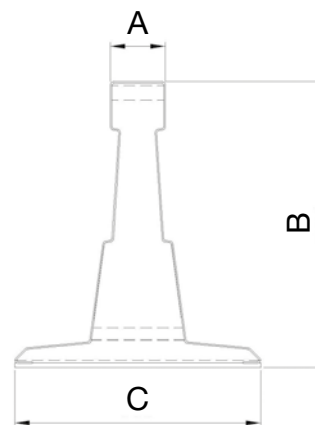


zoneguard®

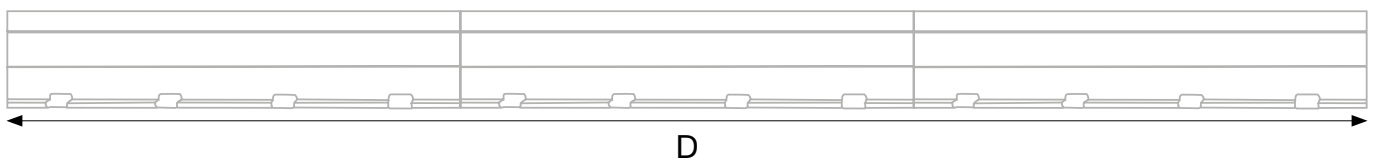
VECU-STOP®

Zoneguard® Specifications:

- Successfully tested to EN1317, N2 W2 and N2 W6 Standards
- Accepted by Highways England
- Successfully tested to both NCHRP 350 and MASH 08
- Accepted by the Federal Highway Administration
- Permanent or temporary applications
- Emergency protection for highway structures
- Reduced risk to operators with fewer vehicle movements
- Fast installation with up to 400m per hour



A	160mm
B	813mm
C	700mm
D	12m/15m
	92kg/m



 ISO 9001 Quality Management FS 82117	 ISO 14001 Environmental Management EMS 553683	 OHSAS 18001 Occupational Health & Safety Management OHS 553684
---	--	---



Visit our website

ASSET
International
 VEHICLE RESTRAINT SYSTEMS

HEAD OFFICE:
 Springvale Business & Industrial Park,
 Bilston, West Midlands, WV14 0QL
 Tel: **01902 499400**
 Fax: 01902 402104
 Email: sales@zoneguard.uk.com

SCOTTISH OFFICE:
 1 McMillan Road, Netherton Industrial Estate,
 Wishaw, Lanarkshire, ML2 0LA
 Tel: **01698 355838**
 Fax: 01698 356184
 Web: **www.asset-vrs.co.uk**